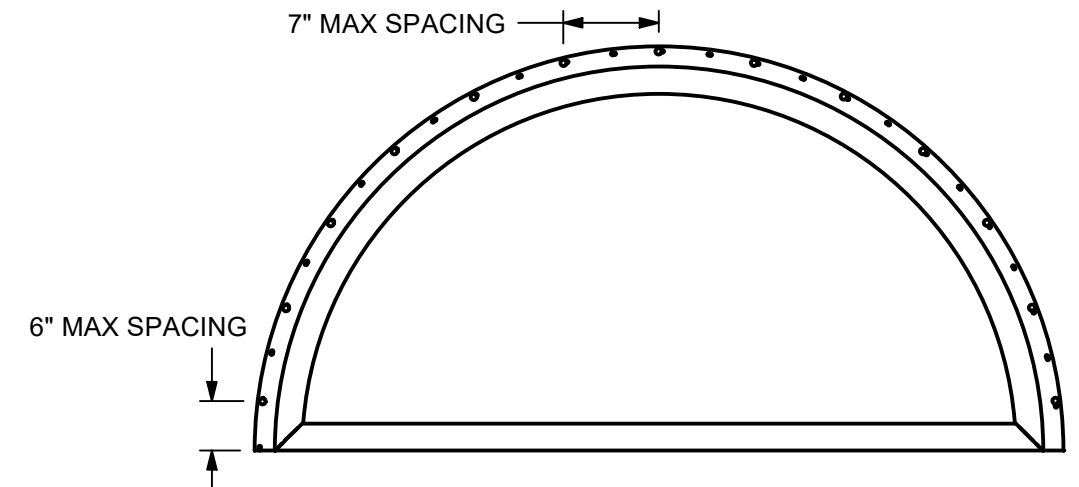
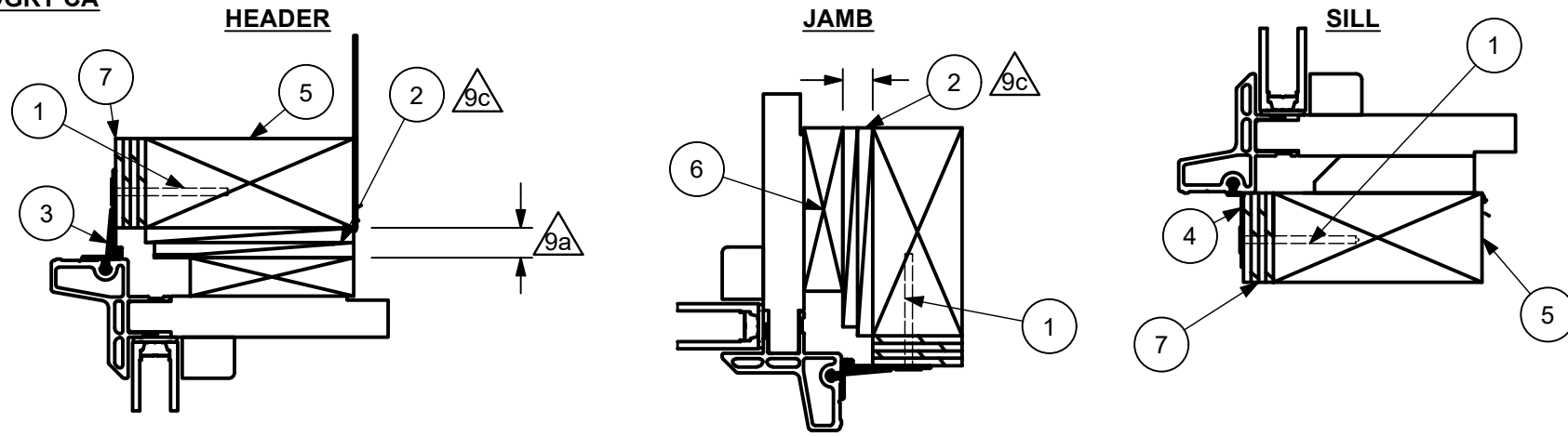


ELALDGRT CA

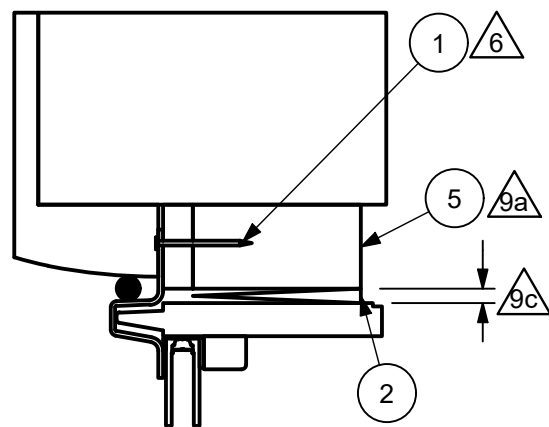


NAIL FIN INSTALLATION

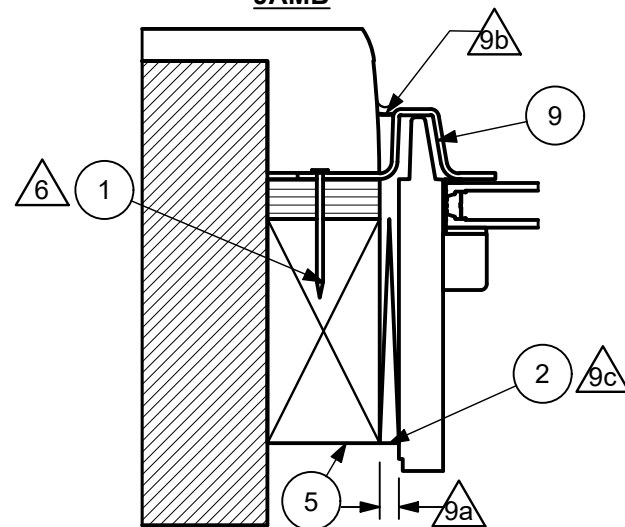
- SECURE NAILING FIN WITH 2" GALAVINIZED ROOFING NAILS, MINIMUM OF TWO PER SIDE. SPACE PER THE ELEVATION
- PLACE ONE NON-CONTINUOUS 5/16' DIAMETER BEAD OF ASTM C920 GRADE NS CLASS 25 SEALANT TO BOTTOM OF SILL/FRAMING

ELALDGRT DH

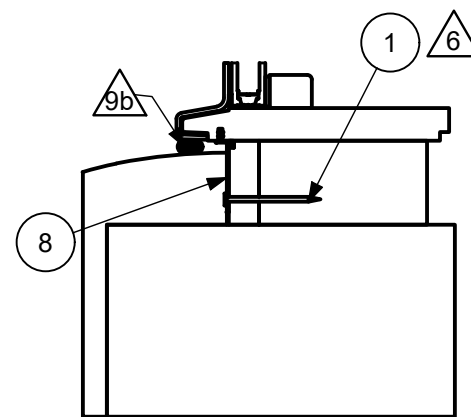
HEAD JAMB (RADIUS)



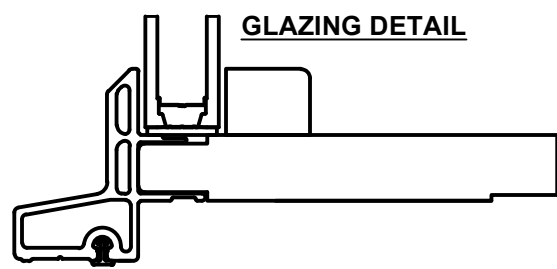
JAMB



SILL



GLAZING DETAIL



UNIT	MAX FRAME SIZE	DP RATING
ELALDG RT	72 X 83-1/8	+50/-50
ELALDG RT	56 X 29-1/8	+50/-50
ELALDG RT	83 X 72-7/8	+50/-50
ELALDG RT	75 X 37-1/2	+50/-50

NOTES:

- FOR GENERAL SPECIFICATIONS, REFER TO DOC 00003952
- FOR INSTALLATION DETAILS REFER TO DOC 00033990 (ELALDG RT-DH FRAME), 00055201 (ELALDG RT-CA FRAME)
- BRACKET PLACEMENT IS SYMMETERICAL
- GLASS COMPLIES WITH ASTM E1300
- UNIT MUST NOT BE DIRECT CONTACT WITH EITHER CONCRETE OR TREATED BUCK MATERIAL. IF SHIM SPACE IS LESS THAN 1/8" INCH, WRAPPING THE UNIT ON ALL 4 SIDES WITH WINDOW FLASHING TAPE IS REQUIRED AS A BARRIER BETWEEN THE UNIT AND CONCRETE OR LUMBER
- IF CHEMICALLY TREATED LUMBER IS USED FOR BUCK MATERIAL, FASTENERS INTO THE BUCK MUST BE A MINIMUM OF 0390 OZ/FT² ZINC HOT DIPPED GALVANIZED STEEL TYPE 304 OR 316

- MASONRY APPLICATION SHOWN, WOOD APPLICATION ALSO APPLIES
- FOR ELEVATIONS, SPACING INFO AND APPROVED METHODS OF INSTALLATION, REFER TO DOC 00033567
- APPLY TO ALL INSTALLATION METHODS:
 - △ a. ROUGH OPENING:
 - MAX OF .500 INCH GAP AT POINTS OF ATTACHMENT.
 - b. SEALANT:
 - USE SILICONE OR EQUIVALENT
 - SEAL BETWEEN NAILING FIN AND BUCK ON ALL FOUR SIDES OF UNIT
 - SEAL AROUND FRAME TO WALL WITH BACKER ROD AND SEALANT
 - △ c. SHIMS:
 - A SHIM MUST BE PLACED 4" TO 6" FROM EACH CORNER
 - ALL OTHER SHIMS MUST BE PLACED A MAX OF 15" APART

9	-	INTEGRAL NAILING FIN
8	00005291	NAILING FIN
7	-	SHEATHING
6	-	FILLER BY CONTRACTOR
5	-	TREATED FRAMING MATERIAL
4	00005281	NAILING FIN, SILL/JAMB
3	00005306	NAILING FIN, RADIUS
2	-	SHIM
1	-	2" GAL. ROOF NAIL
ITEM	DWG NO	DESCRIPTION

PARTS LIST

MARVIN  **RESEARCH & DEVELOPMENT**

COLLECTION: ELEVATE

DWG TYPE: INSTALLATION
DESCRIPTION: INSTALLATION ELEVATIONS, NAIL FIN, THROUGH JAMB

CHK: CH	SIZE: B	CLASS: MISC	DWG NO: 00140157
APP: CRR	SCALE: 1/3	DATE: 10/18/2023	DWG BY: MARVINf_MattK
			SHEET: 1 OF 2

NOTICE - CONFIDENTIAL INFORMATION

The information in this document is privileged and strictly confidential. The information contained herein shall be used only by Marvin employees and by those agents or suppliers granted official written permission. If the reader of this document is not the intended recipient, or the employee or agent of the intended recipient, please delete this document from all data storage devices, and destroy all hard copies. Any unauthorized dissemination, distribution, copying or other use of the information contained in this document is strictly prohibited.

REV	DESCRIPTION / REQUESTOR	ECN NO	DATE	REV BY
0	ORIGINAL ISSUE	27740	12/4/2023	JH

CATEGORY:
DIRECT GLAZE

UNIT TYPE:
ELALDG RT